

C.P.E. Bach
Sinfonie in F, Wq. 183/3

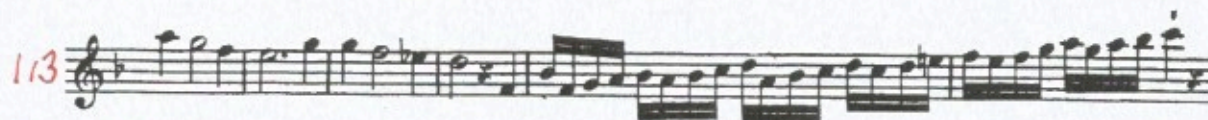
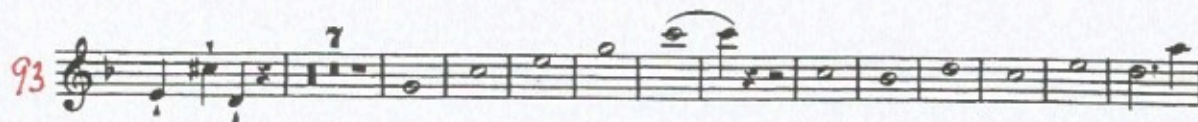
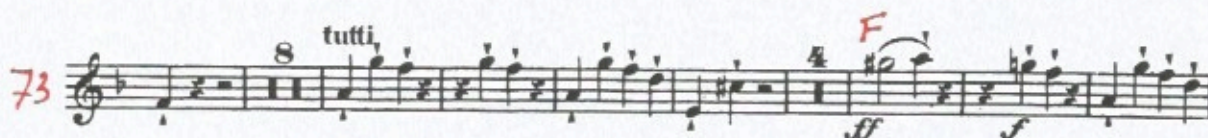
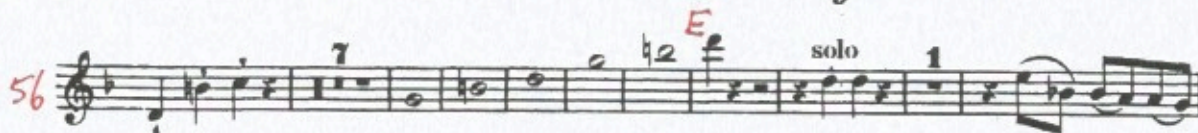
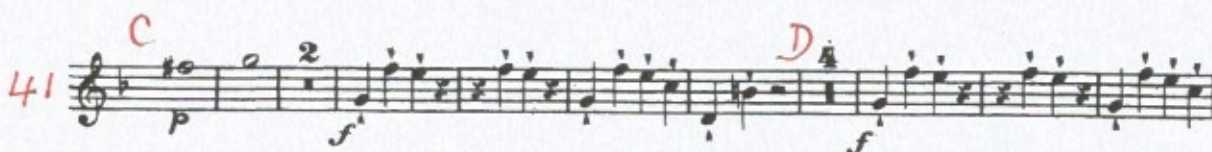
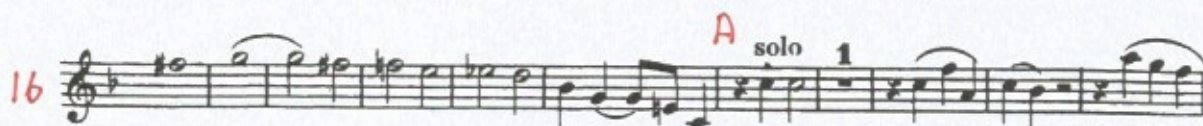
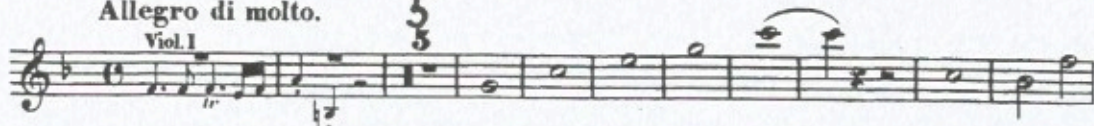
1

OBOE PRIMO.

Allegro di molto.

Viol. I

5



OBOE PRIMO.

-2-

131 *f* *H*

143 *ff* *I* *Larghetto.* *Viol. 1mo* *allacca*

PRESTO. *f*

15 *ten.* *tr* *A*

24 *f*

39 *ff*

52 *ff* *C*

65 *f* *tr* *D*

84 *f* *-3-E-4-*

97 *f*

FINE.

C.P.E. Bach
Sinfonie in F, Wq. 183/3

1

OBOE SECONDO.

Allegro di molto.

7

19 *A* solo 1 tr 3-8-1- 4

33 tutti 1 *C* 2 *p*

46 *D* 4 7

64 *E* solo 1 8

82 tutti *F* 4 *ff* *f*

93 7

111

118 *G* solo 1 tutti 1

OBOE SECONDO.

127 *p* *f* *f* *H*

141 *ff* *I* *14* *Larghetto.* *38* *Viol. allacca*

PRESTO. *f* *A*

12 *tr*

23 *7* *1*

37 *f* *ff* *ff* *2*

48 *ff* *ff* *f* *4*

63 *tr* *8* *f*

82 *7* *3*

96 *f* *ff* *1*